



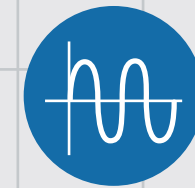
Low Clamp 24V Surface Mount TVS

SUPER CLAMP™ series of TVS (transient voltage suppressor) diodes with snapback characteristics features a low clamping ratio between the breakdown voltage and clamping voltage. This low clamping ratio provides a lower clamping voltage at a higher peak pulse current than conventional TVS, allowing designers to use capacitors with lower working voltages, in addition to switching devices including polarity protection diodes, load switch, and regulator ICs. Additionally, SUPER CLAMP™ TVS have a very stable breakdown voltage and high peak pulse current at a wide operating range of -55 °C through +175 °C. Stable operating characteristic of SUPER CLAMP™ TVS makes the circuit meet automotive standard test ISO7637.

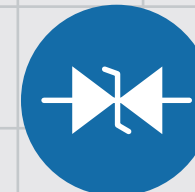


Official Website X LinkedIn
For more information: marketing@ts.com.tw

FEATURES



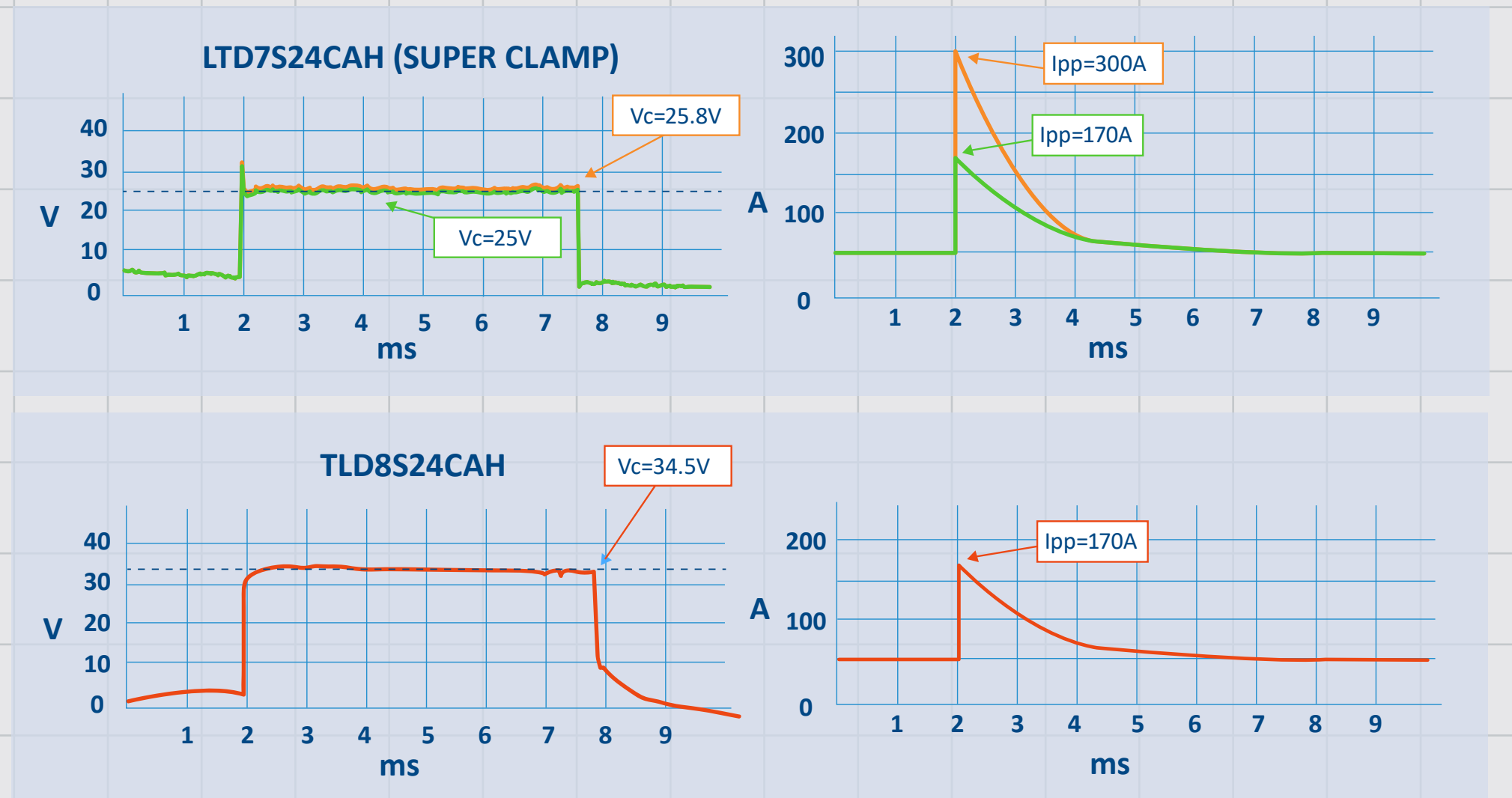
**CLAMPING RATIO
(VC/STAND-OFF VOLTAGE)
BETWEEN 1.0~1.05**



**BIDIRECTIONAL
TRANSIENT
VOLTAGE SUPPRESSOR**



**AUTOMOTIVE
QUALIFIED
AEC-Q101**



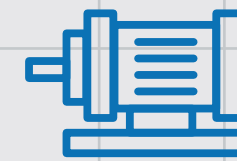
SUPER CLAMP series of TVS delivers significantly lower clamping voltage compared to conventional TVS under the same pulse current conditions, as shown in the top figure.

Additionally, SUPER CLAMP series can handle much higher pulse currents within the same package size, such as DO-218AB: 300A v.s. 170A, making it an ideal choice for high-performance applications.

APPLICATIONS



AUTOMOTIVE



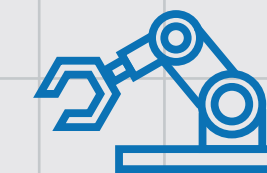
MOTOR



REVERSE
BATTERY
PROTECTION



CAR
LIGHTING



ROBOTIC
ARM

SPECIFICATION

Part number	Package	V _{WM} (V)	V _{BR} (V) Min	V _{BR} (V) Max	Max I _{PPM} @T _p = 10/1000(μs)	VC Clamping
LTD7S24CAH	DO-218AB		26.7	29.5	300	24
LSMC24CAH*	SMC	24	29.5	32.5	100	
LSMB24CAH*	SMB		31	35	45	

*Release scheduled by 2H 2025



**TAIWAN
SEMICONDUCTOR**